

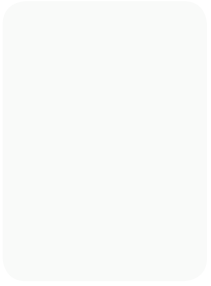


INFINITY OFFICE FURNITURE

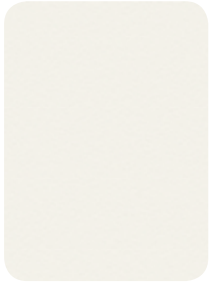
**COMMERCIAL
COLOUR RANGE**



COMMERCIAL COLOUR RANGE



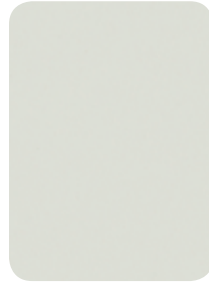
Snowdrift
C



Malibu
N



Streetlight



Baikal
N



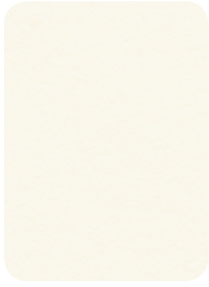
Silver Strata



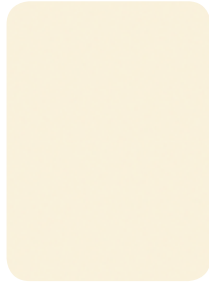
Seal Grey
C



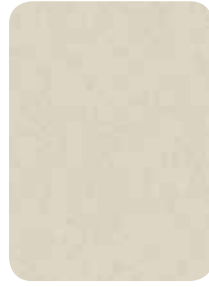
Warm White
C



Gentle Beige
C



Antique Wiluna White



Finesse Sand
N



Rock Salt



Prairie Beige



Snow Elm



Ash Woodline
N



Finesse Stone
N



Cinnamon Ash
N



Habitat



Smoke Melange



Lemon Tree
C



Manitoba Figured



Natural Oak



Refined Oak



Idyllic



Urban Wood



Golden Beech
C



Euro Beech



Cherry
C



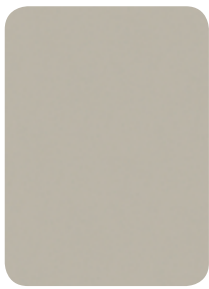
Khaya Mahogany



South West Jarrah



Prestige Walnut



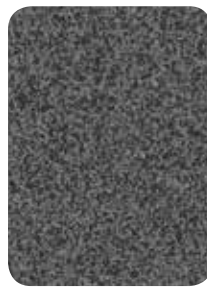
Dawn Grey



Brushed Silver



Storm



Ironstone



Deep Anthracite



Black



Doe Skin



Velveteen



Sarum Grey



Brushed Nickel



Iron Ore



Graphite



Charred Woodline



Charred Oak



Straight Grain Wenge

C = Core Range*

N = New to Commercial Range

*Core Range decors are available ex-stock in 18mm and 25mm, 3600 x 1800mm or 2400 x 1800mm Standard Particleboard.

FORMICA COMMERCIAL OFFER

| | |
|---|---|
| Colours | 45 |
| Delivery Lead Time (including Core Range* items) | Next day delivery if the product comes from the State warehouse. Dispatched within seven working days if the product comes from factory stock. Your sales representative will advise about local stocking policy and indicative transportation time from the factory to your location. Note: Core Range* items availability is ex-stock, depending on State inventory policy (which reflects local demand). |
| Standard Particleboard Sheet Size | Either 2400mm x 1800mm sheet size or 3600mm x 1800mm sheet size – depending on State inventory policy (which reflects local demand). Plant stock is held in 3600mm x 1800 in 18mm and 25mm thicknesses. Indicated Standard Particleboard options in 2400mm x 1800mm (18mm and 25mm) and 3600mm x 1800mm (33mm) are Made to Order (MTO). Your sales representative will advise about local stocking policy and indicative transportation time from the factory to your location. |
| Standard Particleboard Thicknesses | 18mm and 25mm are available for the 45 commercial colours. 3600mm x 1800mm (33mm) is available as MTO. Note that we hold normal commercial quantities of inventory. Large orders of individual line items may be considered to be MTO in the normal lead time. Note: Core Range* items availability. |
| ABS Edging | 21mm, 22mm, 29mm and 38mm matching edgings are available in 100lm rolls for all 45 colours. |
| Made to Order | If substrates or thicknesses other than the Standard Particleboard (above) are required, customer service or your sales representative will identify options that are available and lead time. For complete details on the Formica Decorated Panel offer please refer to the Formica National Complete Product Offer 2014. |

FORMICA® COMMERCIAL COLOUR RANGE takes the hard work out of colour schemes. Reflecting current trends, it combines woodgrains, patterns and solids that are easy to mix and match. Colours come in large decorated board sizes, perfect for commercial use, with a Pearl finish to conceal minor scratches and finger marks. And its modern spectrum means the Formica Commercial Colour Range can help you create stunning interiors every time. Colour matched Formica ABS Edgings are also available.



INFORMATION Visit formica.com.au for colour and design tips, technical information, care, maintenance and more.

ENQUIRIES Call 132 136.

SAMPLES Visit formica.com.au or call 1800 002 204.

WARRANTY 7 year limited warranty.

For more inspiration join us online at facebook.com/thelaminexgroupau



Formica stockist



formica.com.au

Formica Commercial Range laminates are marketed and distributed by Laminex Group Pty Limited ABN 98 004 093 092, trading as Laminex. The colours and finishes of the products featured within the imagery in this brochure are as close to Formica Commercial Range laminates as photographic lighting and our printing processes allow. Different camera angles, although not designed to be misleading, can sometimes distort actual size and distances. Formica Commercial Range laminates are no different than any other material in that darker colours will always show scratches and superficial wear and tear more readily than lighter colours. Formica Commercial Range laminates should be protected from strong, direct sunlight as continuous exposure may cause discolouration or fading to the surface. Please obtain a copy of the terms and conditions of Formica laminates 7 year limited warranty from formica.com.au. This warranty is in addition to any rights that may exist under the Australian Consumer Law. **Formica**[®]